

Pacific Fans Ltd

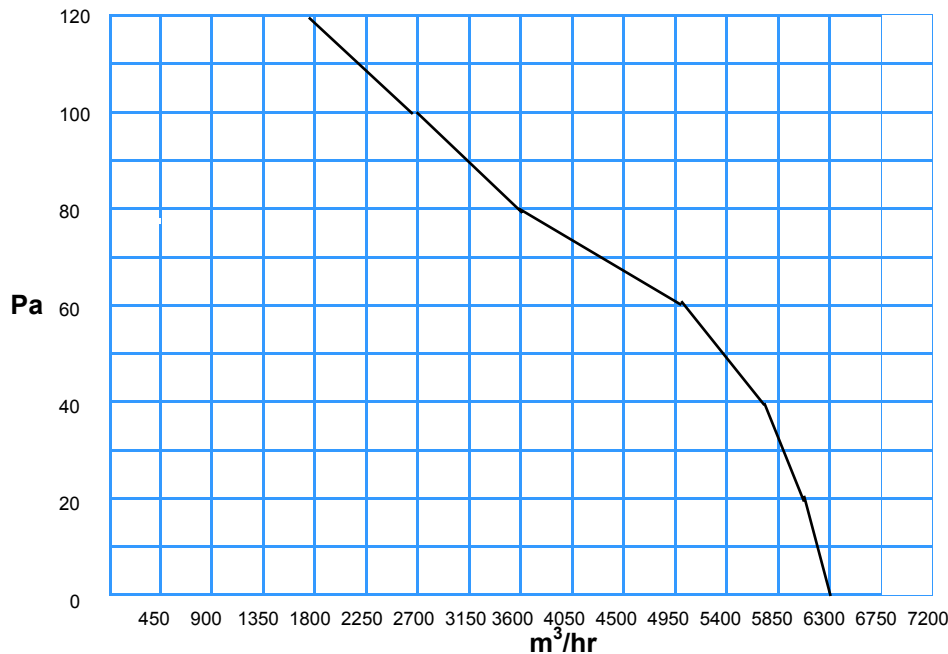
PORTABLE AXIAL FAN



The Portable Axial Fan is specifically designed to provide air movement and ventilation in a variety of situations. The fan casing is moulded from plastic. The motor and bracket are aluminium and the adjustable pitch impeller is polypropylene. The high efficiency impeller with eight wings provides for a very high air flow of 6300 m³/hr.

This makes the whole unit corrosion free, ideal for various applications, including Greenhouse ventilation, Carpet Drying, Building material drying and can be used as a Portable Mancooler.

PERFORMANCE CURVES



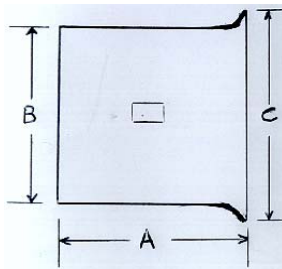
APPLICATION SUGGESTIONS

Greenhouse Ventilation
Carpet Drying
Drying Building Materials
Portable Mancooler
Other Situations where portability of an air movement unit is advantageous

TECHNICAL DATA

Ref	Model	Diam, mm	Speed	Voltage	Hz	m ³ /hr	Watts	Current	Noise
1	GH450-4-1	450	1400	230	50/60	6300	300	2.2A	63

DIMENSIONS



Ref	A	B	C
1	425	450	570

NOTES:

- Units can be supplied with or without Stand
- Flex & Plug (optional extra)
- Flexible Ducting 450mm diam. (optional extra)
- Units supplied with Carry Handle
- IP55 Terminal Box
- Polypropylene Impeller (adjustable pitch) Standard setting 30°
- Stainless Steel fasteners fitted